



WEDGE Stage Monitor



APPLICATIONS

Vocal Monitor
Instrument Reinforcement
Sound Stages

FEATURES

Two-Way Active
LF Device: 12 in. (304.8mm)
HF Device: 2 in. (50.8mm)
Epoxy Mastic Finish
EP-4 Connectors
(1 Male, 1 Female)

GENERAL DESCRIPTION

The WEDGE series stage monitor is the result of technology advances in stage monitoring made by Clair Brothers. Modeled after the renowned 12AM stage monitor, the same technology is available in a cost-effective, yet sophisticated stage monitor system.

This portable low-profile, high output system delivers incredible SPL from a small enclosure. The high frequency driver features a two-inch throat diameter (three-inch voice coil diameter) and a pure titanium diaphragm, coupled to a proprietary patented asymmetrical horn.

A custom 12-inch cone transducer provides clean mid-range and surprisingly extended low frequency reproduction. Dual rear-mounted connectors allow the use of multiple cabinets from a single amplifier. Constructed to the same rigid standards as Clair Brothers signature line of touring monitors, the WEDGE is able to withstand the requirements of any live or installed audio application.

Cabinets are available as single units or in mirror image pairs for stereo orientation and are available in either an active or passive version.

Clair Brothers combines amplification and proprietary DSP processing in portable racks for all monitor systems. Custom cabling for systems is also available and can be pre-wired, labeled and delivered in road cases.

As with all Clair Brothers products, the WEDGE is constructed of the finest Baltic birch plywood and finished with a rugged exterior epoxy to withstand the most demanding conditions. The grille is constructed of 14 gauge perforated steel with a painted finish and reticulated foam back.

OPTIONS & ACCESSORIES

WEDGE-P – Passive Model

RC-12 – Road Case for (2) WEDGE

Proprietary DSP + Amplification Rack Packages

Custom Colors Available

Call or e-mail Clair Brothers for more information on available options.
(717-665-4000) e-mail: sales@clairbrothers.com

WEDGE Stage Monitor



AUDIO SPECIFICATIONS

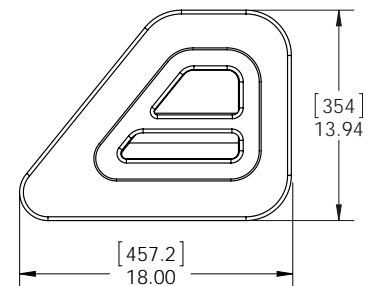
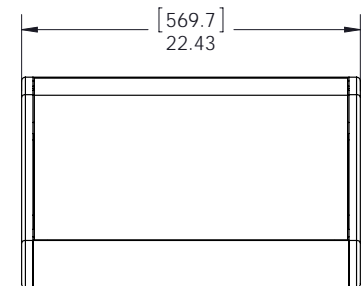
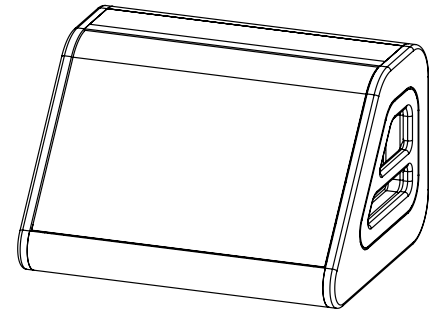
Loudspeaker Type	Two-Way Active	
Frequency Response (+/- 2dB)	65Hz–17kHz	
Recommended Power Amplifier	1200W Peak @ 8 Ohms	
Sensitivity (1 Watt @ 1 Meter)	LF	104 dB SPL
	HF	108 dB SPL
Maximum Output	Peak	131 dB SPL
Drivers	LF	(1) 12 in. (304.8mm)
	HF	(1) 2 in. (50.8mm)
Nominal Impedance	LF	8 Ohms
	HF	8 Ohms
Power Handling	LF	300W Program
	HF	220W Program
Dispersion	Proprietary Asymmetrical	
Input Connections	Standard	(2) EP-4 Connectors (1 Male, 1 Female)

MECHANICAL SPECIFICATIONS

Enclosure	Shell	18mm Baltic Birch
	Finish	Black Epoxy Mastic
Grille	Perforated Steel, Foam Backed	
Dimensions	Height	13.94 in. (354.0mm)
	Width	22.43 in. (569.7mm)
	Depth	18.00 in. (457.2mm)
Weight	Active	67 lbs. (30.4kg)
	Passive	69 lbs. (31.3kg)
Shipping Weight	Active	75 lbs. (34.0kg)
	Passive	77 lbs. (34.9kg)

Note: All wattage figures are calculated using the rated nominal impedance.

Clair Brothers products are designed to perform optimally by utilizing factory recommended proprietary DSP settings.



WEDGE EP4 Configuration

Pin	Use
1	Low (-)
2	Low (+)
3	High (-)
4	High (+)

WEDGE-P EP4 Configuration

Pin	Use
1	Low & High (-)
2	Low & High (+)
3	Unused
4	Unused

ARCHITECT AND ENGINEER SPECIFICATIONS

The loudspeaker shall be a two-way active system, or passive when specified, featuring a total of two (2) drivers. The low/mid frequency section shall consist of one 12 in. driver capable of handling 300 watts of pink noise with a 6 dB crest factor for eight hours (as per EIA RS-426-A standard). The high frequency section shall contain a 2 in. exit, 3 in. voice coil diameter compression driver coupled to a custom CBAS asymmetrical horn. The driver shall be capable of handling 220 watts (1 kHz to 10 kHz) of pink noise with a 6 dB crest factor for two hours (as per AES-1984 and ANSI S4.26-1984 standards). The enclosure shall be constructed of 18mm, 13-ply Baltic birch and be covered with a durable black epoxy mastic finish. Dimensions shall be 13.94 in. high, 22.43 in. wide, and 18.00 in. deep. The system weight shall be 67 lbs. (30.4kg) for the active and 69 lbs. (31.3kg) for the passive. The loudspeaker system shall be the Clair Brothers WEDGE.

CLAIR BROTHERS • ONE CLAIR BOULEVARD • MANHEIM, PA 17545 • 717-665-4000 • WWW.CLAIRBROTHERS.COM

CBAS20140828

Due to constant research, development and improvements all specifications are subject to change without notice.

