



1.5AM Coaxial High Output Stage Monitor

ONE
series



APPLICATIONS

Vocal Monitor
Instrument Reinforcement
Drum Fill
Side Fill
DJ Monitors
Sound Stages

FEATURES

Coaxial, Horn-loaded
Two-Way Active
Max Output 136 dB SPL
LF Device: 15 in. (381mm)
HF Device: 4 in. (101.6mm)
40°H x 60°V Coverage
2 Ergonomic Handles
EP-4 (or NL4) Connectors

GENERAL DESCRIPTION

The Clair Brothers 1.5AM is a high output 15" coaxial stage monitor with incredible low frequency output. This portable, low profile, high output stage monitoring speaker delivers incredible SPL, exceptional vocal reproduction, and unprecedented low frequency reproduction from a small enclosure. Designed for bi-amplification and custom processing (utilizing Clair Brothers amplification and processing), the 1.5AM is in a class by itself. No other product can duplicate its combination of performance, size and packaging.

The component at the heart of the 1.5AM is a custom coaxial assembly with the most powerful combination of woofer and compression driver on the market in this size class. The high frequency compression driver features a 2" throat diameter (4" voice coil diameter), a pure titanium 4" diaphragm with a titanium nitride coating and a neodymium magnet assembly. The driver is joined to a 40° horizontal by 60° vertical rotatable horn. A 15" carbon fiber reinforced cone transducer provides mid-bass and low frequency reproduction. The combination of our professional high-output components delivers exceptional performance.

Dual rear mounted EP-4 connectors (male and female) allow the use of multiple cabinets from a single amplifier. Low profile styling and flush mounted side handles provides great aesthetic appeal and portability. The speaker grille is constructed of aerospace grade 1/8" gauge perforated aluminum and is specially treated to create a durable exterior finish.

Clair Brothers combines amplification, and proprietary DSP processing in portable racks for all monitor systems. Custom cabling for systems is available and can be pre-wired, labeled and delivered in road cases.

As with all Clair Brothers products, the cabinet is constructed of the finest Baltic birch and finished with a rugged polyurea paint to withstand the most demanding conditions.

OPTIONS & ACCESSORIES

RC-1.5 – Road Case for (2) 1.5AM (P/N: 11223)
Proprietary DSP + Amplification Rack Packages
Custom Colors Available

Call or e-mail Clair Brothers for more information on available options.
(717-665-4000) e-mail: sales@clairbrothers.com

1.5AM Coaxial High Output Stage Monitor

ONE
series



AUDIO SPECIFICATIONS

Loudspeaker Type	Two-Way	Coaxial Stage Monitor
Frequency Response		55Hz–18kHz (+/- 2dB) 43Hz–20kHz (-10dB)
Recommended Power Amplifier		1300–2300W Peak @ 8 Ohms
Sensitivity (1 Watt @ 1 Meter)	LF	99 dB SPL
	HF	109 dB SPL
Maximum Output	Peak	136 dB SPL
Drivers	LF	(1) 15 in. (381mm)
	HF	(1) 4 in. (101.6mm)
Nominal Impedance	LF	8 Ohms
	HF	16 Ohms
Power Handling	LF	800W Cont. 3200W Peak
	HF	130W Cont. 260W Peak
Dispersion		40° H x 60° V (Rotatable)
Input Connections	Standard	(2) EP-4 Connectors (1 Male, 1 Female)
	Optional	(2) NL4 Connectors

MECHANICAL SPECIFICATIONS

Enclosure	Shell	Baltic Birch Premium Grade
	Finish	Black Polyurea
Grille		Aerospace Grade Perforated Aluminum, Foam Backed
Dimensions	Height	13.79 in. (350.3mm)
	Width	25.00 in. (635.0mm)
	Depth	23.11 in. (587.0mm)
Weight		68 lbs. (30.8kg)
Shipping Weight		84 lbs. (38.1kg)

Note: All wattage figures are calculated using the rated nominal impedance.

Clair Brothers products are designed to perform optimally by utilizing factory recommended proprietary DSP settings.

1.5AM EP-4 Pin Configuration

Pin	Use
1	Low (-)
2	Low (+)
3	High (-)
4	High (+)

ARCHITECT AND ENGINEER SPECIFICATIONS

The loudspeaker shall be a two-way active system featuring a total of two drivers. The low frequency device is one 15 in. driver capable of handling 800 watts of pink noise with a 6 dB crest factor for 8 hours (as per EIA RS-426-A standard). The high frequency device is a 2 in. exit, 4 in. voice coil diameter compression driver joined to a 40° horizontal by 60° vertical rotatable horn. The 4 in. driver is capable of handling 130 watts (1 kHz to 10 kHz) of pink noise with a 6 dB crest factor for two hours (as per AES-1984 and ANSI S4.26-1984 standards). The signal processing is Clair Brothers proprietary data. The enclosure shall be constructed of premium grade Baltic birch and covered with a durable black polyurea finish. The dimensions shall be 13.79 in. high, 25.0 in. wide, and 23.11 in. deep. The system weight shall be 68 lbs. (30.8kg). The loudspeaker shall be the Clair Brothers 1.5AM.

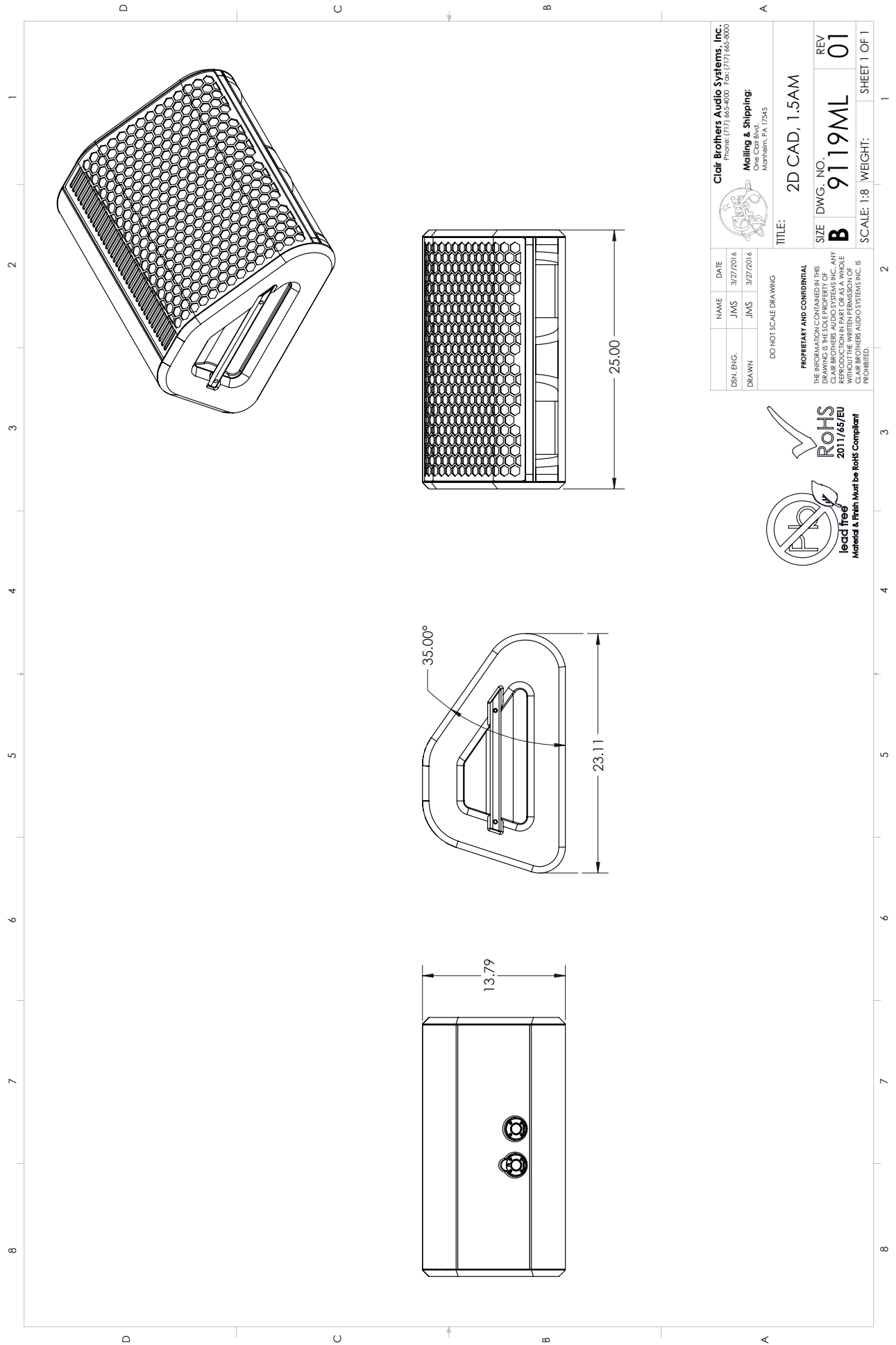
CLAIR BROTHERS • ONE CLAIR BOULEVARD • MANHEIM, PA 17545 • 717-665-4000 • WWW.CLAIRBROTHERS.COM

CBAS20170313

Due to constant research, development and improvements all specifications are subject to change without notice.



TECHNICAL DRAWINGS



Clair Brothers Audio Systems, Inc. Phone: (717) 663-8600 Fax: (717) 663-9600		Mailing & Shipping: One Clair Blvd. Manheim, PA 17545	
DSN. ENG.	NAME	DATE	TITLE:
DRAWN	JMS	3/27/2016	2D CAD, 1.5AM
	JMS	3/27/2016	SIZE DWG. NO. B 9119ML REV 01
DO NOT SCALE DRAWING PROPRIETARY AND CONFIDENTIAL THE INFORMATION CONTAINED IN THIS DRAWING IS THE SOLE PROPERTY OF CLAIR BROTHERS AUDIO SYSTEMS INC. ANY REPRODUCTION IN PART OR AS A WHOLE WITHOUT THE WRITTEN PERMISSION OF CLAIR BROTHERS AUDIO SYSTEMS INC. IS PROHIBITED.			SCALE: 1:8 WEIGHT: SHEET 1 OF 1

